

A vertical graphic on the left side of the page. It features a black background with the word "TRAPS" written in large, white, sans-serif capital letters. To the left of the text is a blue vertical band with a white, abstract, circular pattern resembling a fingerprint or a stylized eye.

## Traps, Advanced Endpoint Protection Technology Overview

---

### Introduction

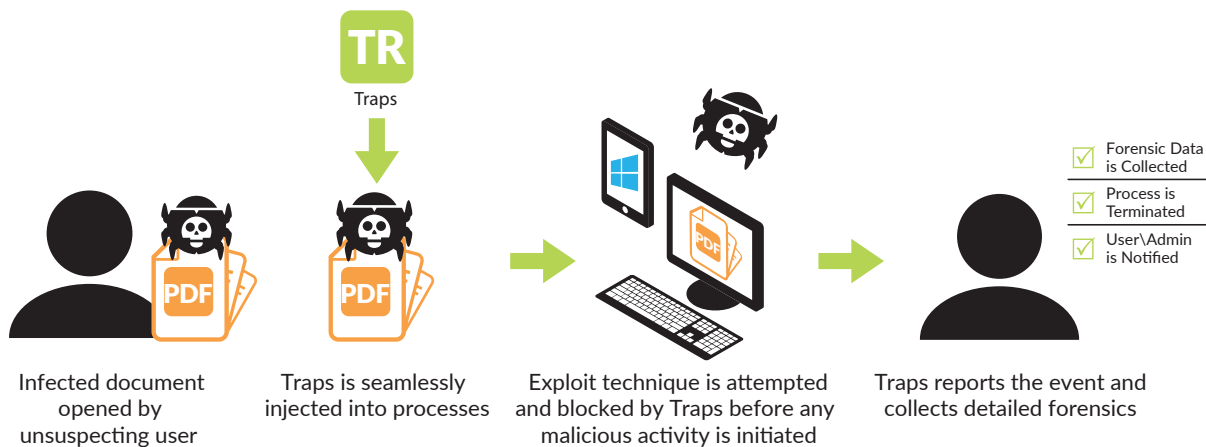
Cyberattacks are attacks performed on networks or endpoints in order to inflict damage, steal information, or achieve other goals that involve taking control of computer systems that belong to others. Cyberattacks are perpetrated either by causing a user to unintentionally run a malicious executable, or by exploiting a weakness in a legitimate executable in order to run malicious code “behind the scenes” without the knowledge of the user.

Despite a plethora of endpoint security products on the market purporting to solve this problem, one can pick up any newspaper and realize that endpoints are still being infected at an alarming rate. A new approach was needed to protect endpoints from advanced threats.

### *Why Endpoints Still Get Infected*

Traditional endpoint protection solutions use methods that simply cannot keep up with the rapidly evolving threat landscape. The most advanced threats these days leverage vulnerabilities in software that we use on a regular basis. They often come in the form of commonly used data files (e.g., pdf, rtf, doc, ppt, xls), or they can be individually crafted to target proprietary software used in various industries. These files open just fine in their native applications and display content that looks normal, but there is malicious code embedded in the file. This code exploits a vulnerability in the native application causing the attacker’s code to run. All of this can happen as your endpoint anti-malware suite stands idly by looking for a bad executable that it’s seen before, or some other indication that something bad is happening. The problem is, there may not be any indication that something bad has happened. Until now, patching was the only way to ensure protection from known vulnerabilities, and there was no reliable method to protect systems from unknown vulnerabilities.

With vulnerabilities existing long before patches are released, it makes for an inevitable delay in installing patches, and increases the security risk.



**Figure 1: Exploit prevention**

### Stop Detecting, Start Preventing

There was a time in the not-too-distant history where information security professionals decided that it was virtually impossible to prevent these kinds of advanced threats on the endpoint. They focused their attention on detection and response. However, detecting malware has resulted in months of data stolen, even years. In the last couple of years, there has been a pent-up demand for a new revolutionary approach. This new approach will help rebuild lost confidence in endpoint security, and is one built on the principle that attacks on the endpoint can not only be detected, but actually prevented. We call this Advanced Endpoint Protection.

Advanced Endpoint Protection should deliver on the following:

1. It must be able to prevent all exploits, including those utilizing unknown zero-day vulnerabilities.
2. It must be able to prevent all malicious executables, without requiring any prior knowledge.
3. It must provide detailed forensics against prevented attacks to strengthen all areas of the organization by pinpointing the target and techniques used.
4. It must be highly scalable and lightweight to seamlessly integrate into existing operations with minimal to no disruption.
5. It must integrate closely with network and cloud security for quick data exchange and cross-organization protection.

### How Traps Works

Traps™ is an advanced endpoint protection solution that prevents advanced attacks originating from either exploits or malicious executables before any malicious activity can successfully run, regardless of software patches in place.

If an attack attempt is made, Traps will immediately block the technique or techniques, terminate the process, and notify both the user and the administrator that an attack was thwarted. Whenever a block does occur, Traps will collect detailed forensics,

including the offending process, the memory state when it was prevented, and many other details that are reported to the Endpoint Security Manager (ESM).

### Multiple Attack Types, Total Protection

Attacks come in different forms and can arrive via multiple vectors including Web, email, and external storage. Most traditional endpoint security products protect endpoints from malicious executable files, which are the least sophisticated form. The most advanced and targeted attacks arrive in the form of seemingly harmless data files that are opened by legitimate applications. For example, malicious code can be implanted in a Microsoft Word or PDF document. Once the file is opened, the malicious code takes advantage of a vulnerability in the legitimate application being used to view the file, allowing it to execute code and take full control of the endpoint. We call this an exploit.

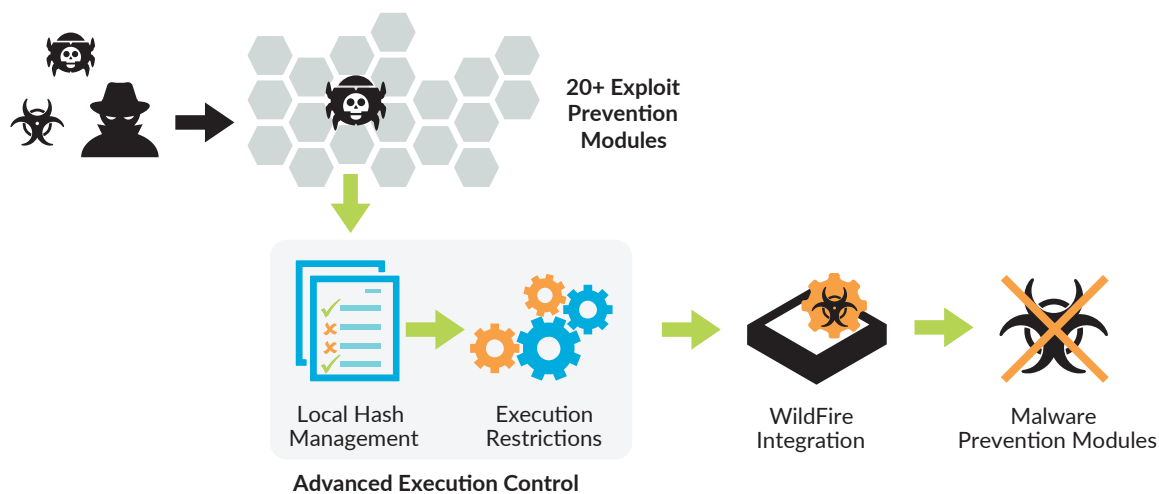
Traps protects endpoints by preventing malware in the form of executables, and exploits in the form of data files or network-based attacks.

### Preventing Exploits

Many advanced threats work by placing malicious code in a seemingly innocuous data file.

When the file is opened, the malicious code leverages a vulnerability in the native application used to view the file, and the code executes. Because the application being exploited is allowed by IT security policy, this type of attack will bypass whitelisting controls. What sets Traps apart is the fact that it focuses on the core techniques used by all exploits. It turns out that, although there are many thousands of exploits, they all rely on a small set of core techniques that change infrequently. Furthermore, each exploit needs to use a series of those techniques in order to be successful. Traps renders these techniques completely ineffective, which means the application is no longer vulnerable.

The Traps agent injects itself into each process as it is started. When an attacker attempts to exploit a software vulnerability, the Traps protection modules cause the exploit attempt to fail because Traps has already made the process impervious to those



**Figure 2: The right way to prevent malicious executables**

techniques. When the attempt is prevented, the Traps agent kills the process and reports all of the details to the Endpoint Security Manager (see Figure 1).

By default, Traps policy is configured to protect over 100 processes — each one with dozens of proprietary Exploit Prevention Modules (EPMs). But unlike other products, Traps is not limited to protecting only those processes or applications. Our customers use Traps to protect all manner of processes and applications by simply adding them to the policy configuration. This is especially useful for those customers running industry-specific applications. Traps can protect point-of-sale (POS) systems, ATM machines, SCADA, and any other application from exploitation.

If for some reason an application conflicts with one of the EPMs, this is not a problem. Simply disable that EPM for the specific application and computer. The application is still protected by dozens of other EPMs. Since exploits rely on a chain of techniques to successfully run, the other EPMs will continue protecting that application and will block at least one of the techniques, thus breaking the chain.

Examples of attacks that the EPMs can prevent include:

- DLL hijacking — replacing a legitimate DLL with a malicious one of the same name
- Hijacking program control flow
- Inserting malicious code as an exception handler

### **Preventing Malicious Executables**

In addition to preventing exploits hiding in data files or launched over the network, Traps employs a comprehensive approach to the prevention of malicious executables. Malicious executables, also known as malware, can be inadvertently downloaded and run by users without their knowledge. Traps malware prevention engine uses a combination of policy-based restrictions, WildFire™ analysis, and malware protection modules to prevent the execution of malicious executables. When combined, these methods offer unparalleled malware prevention (see Figure 2).

The process works as follows:

**Policy-based Restrictions:** Policy-based restrictions dramatically reduce the attack surface by preventing execution in high-risk scenarios. For example, you may want to prevent the execution of a particular file type directly from a USB drive or of files in directories where applications should not reside.

**Advanced Execution Control:** Prevention can only be achieved with a multilayered approach to continuously reduce the attack surface at every stage of the attack. Traps provides granular execution control capabilities that significantly mitigate the possibility of malware execution.

These controls include:

1. Execution Restrictions – Traps robust restrictions provide granular control of policies related to local and network folder locations, child processes, external media, and unsigned executables. These restrictions increase the business flexibility while minimizing the security risk.
2. Granular System Hardening – For relatively static or special purpose systems, execution control policies can be used to statically define which executables are allowed or prohibited. These are specified by file hash. While WildFire integration can be used to analyze files dynamically, these policy settings can be used to override the WildFire verdict locally.

**WildFire Executable Analysis and Prevention:** WildFire integration provides the ability to have both the security of granular execution control and the manageability of a dynamic security policy driven by automated analysis of unknown executables. If an executable file has never been seen before on the endpoint, Traps can submit the file hash for immediate identification by WildFire. If WildFire identifies the file as malicious, Traps will prevent execution before any damage is done. With nearly two million samples analyzed each day, there is a good chance WildFire has seen the file and can alert Traps if it is malicious. If the file has not been seen by WildFire, it can be automatically uploaded for rapid analysis in order to determine if it is malicious. Since both

Traps and the next-generation firewalls can submit files to WildFire, this integration allows for seamless sharing of threat intelligence between the next-generation firewall and the endpoints.

**Malware Prevention Modules:** If the file is allowed to execute, malicious activity can still be blocked by a Malware Prevention Module (MPM). Like the EPMs, MPMs focus on core techniques leveraged by many types of malware. For example, they will prevent malicious code from being injected into trusted applications.

**Forensics**

Extensive data is gathered from the Traps agent. On an ongoing basis, the agent records and sends to the ESM server information about each process that is run. When an attack is prevented, further detail can be gathered from the endpoint, including a full memory capture and information about the activities attempted by the malicious code. After memory is captured, Traps will then perform a secondary analysis surrounding the nature of the event and search the memory for any traces of malicious activity.

It is important to recognize that the scope of forensic information available after an attack has been prevented is unavoidably less than the information available about an attack that has succeeded and done damage.

Traps aids ongoing security investigations by providing query capabilities based on file, folder and registry criteria used to interrogate all endpoints in the organization.

**Benefits of the Traps Approach**

**Coverage for zero-day vulnerabilities and unknown malware:** Rather than waiting for signatures or indicators of compromise to be released, you remain protected from the newest, most advanced threats.

**Install patches on your own schedule:** Vulnerabilities exist long before patches are released, and deploying patches can be a lengthy and cumbersome process. IT teams struggle to ensure patches are thoroughly tested and deployed to all endpoints within a reasonable timeframe. Furthermore, nearly every organization has those legacy

systems that, for one reason or another, cannot be patched. With advanced endpoint protection, endpoints are protected regardless of patch levels.

**Protect any application from exploits:** The focus on exploit techniques rather than application-specific characteristics means this protection can be extended to any application. While many endpoint security products protect only a few commonly used applications from exploitation, our approach is used by customers to protect hundreds of proprietary applications.

**Minimal performance impact:** This approach does not rely on system scanning, virtualization, or any other bloated technology. The agent is lightweight and nonintrusive. It can be completely invisible to the end user.

**Saves time and money:** When you prevent attacks, you no longer have to deal with the costs of remediation and end-user downtime that often result from malware infection, especially when systems have to be re-imaged.

**Ease of management, no frequent updates:** One of the problems with traditional endpoint-protection products is the need to constantly deploy signature updates. Traps focuses on a small set of techniques that do not require frequent updates.

**Threat intelligence through WildFire integration:** With WildFire-enabled customers benefit from the threat-intelligence ecosystem with over one million samples submitted daily by the community. Automated upload and analysis of unknown executables ensures that every new executable launched on an endpoint can be analyzed.

**Traps Deployment Architecture**

**Endpoint Security Manager Console**

The Traps infrastructure supports various architectural options to allow for scalability to large distributed environment. Installation of the ESM creates a database on a Microsoft SQL server and installs the administrative console within IIS. Microsoft SQL 2008, 2012 and 2014 are supported and the SQL server may be dedicated to ESM or a database can be created on an existing SQL server.

**Traps currently supports the following:**

<b>Operating System:</b>	<b>Virtual Environments:</b>
Windows XP (32-bit, SP3 or later)	Virtual Desktop Incidence (VDI)
Windows Vista (32-bit, 64-bit, and SP2)	Virtual Machine (VM)
Windows 7 (32-bit, 64-bit, RTM and SP1; all editions except Home)	Citrix, VMware, VirtualBox, and Parallels
Windows 8 (32-bit, 64-bit)	<b>Physical Platforms:</b>
Windows 8.1 (32-bit, 64-bit)	Windows Desktops, Servers, and Tablets
Windows 10 (32-bit, 64-bit)	Industry Control Systems (ICS) and SCADA
Windows Server 2003 (32-bit, SP2 or later)	Automated Teller Machine (ATM) and Point-Of-Sale (POS) Systems
Windows Server 2003 R2 (32-bit, SP2 or later)	<b>Browser Support</b>
Windows Server 2008 (32-bit, 64-bit)	Internet Explorer 10 and later
Windows Server 2012 (all editions)	Chrome 27 and later
Windows Server 2012 R2 (all editions)	Firefox 22 and later
	Opera 12 and later

**Table 1: Traps Platform Support**

The Endpoint Server can be installed on Windows Server 2008 R2, Windows Server 2012, or Windows Server 2012 R2 on physical or virtual machines.

### Endpoint Security Manager Servers

ESM servers essentially act as proxies between Traps agents and the ESM database. Communications from Traps agents to ESM servers occur over HTTPS. ESM servers do not store data and, therefore, can be easily added and removed from the environment as needed to ensure adequate geographic coverage and redundancy. To ensure global connectivity, customers who do not use a mobility solution like Palo Alto Networks® GlobalProtect™ may opt to put an ESM server in the DMZ or in a cloud-based environment with external connectivity. ESM servers can be installed on Windows Server 2008 R2, Windows Server 2012, or Windows Server 2012 R2 physical or virtual machines.

### Traps Agent

The Traps agent installer is a ~9 MB MSI package that can be deployed using your software deployment tool of choice. Subsequent updates to the agent can be deployed via the ESM. The agent consumes less than 25 MB on disk and less than 40 MB while running in memory. Observed CPU utilization is less than 0.1 percent. The agent also employs various tamper-proofing methods that prevent users and malicious code from disabling protection or tampering with agent configuration.

The lightweight structure allows for the Traps environment to scale horizontally and support large deployments of up to 10,000 agents per ESM, while still maintaining a centralized configuration and database for policies. Traps can co-exist with most major endpoint security solutions, and the CPU utilization and I/O remains incredibly low. With such minimal disruption, this makes Traps optimal for critical infrastructures, specialized systems, and VDI environments.

### External Logging

The ESM can write logs to an external logging platform, such as SIEM with support for CEF, LEEF and syslog format, in addition to storing its logs internally. For an organization that deploys multiple ESMs, an external logging platform allows an aggregated view of those log databases. Optionally, critical events logged can be forwarded as an email.

## Integrated Security Platform

In 2005 we set out to deliver a next-generation security platform designed from the ground up to reduce an organization's attack surface, and prevent the most sophisticated cyberattacks from achieving their objectives. To accomplish this, it was clear that a disruptive new approach was required, one that increases a customer's ability to see all network traffic; establish positive controls for applications and users; and prevent all attacks through a tightly integrated system that links network, cloud and endpoint security into a single common architecture (see Figure 3).

We have delivered on that strategy and today offer a complete Enterprise Security Platform that is comprised of three core elements: a Next-Generation Firewall, Threat Intelligence Cloud, and Advanced Endpoint Protection. This natively integrated platform eliminates the need for point tools and other disjointed technologies, streamlines day-to-day operations, and significantly boosts an organization's security efficacy through a multi-layered model that prevents threats at each stage of the cyberattack lifecycle.

Our Enterprise Security Platform protects every corner of your organization — from your mobile workers to the core of your cloud-enabled data center. Automation within the platform eliminates the need for expensive, manual processes, and improves an organization's ability to quickly respond to new global threats.

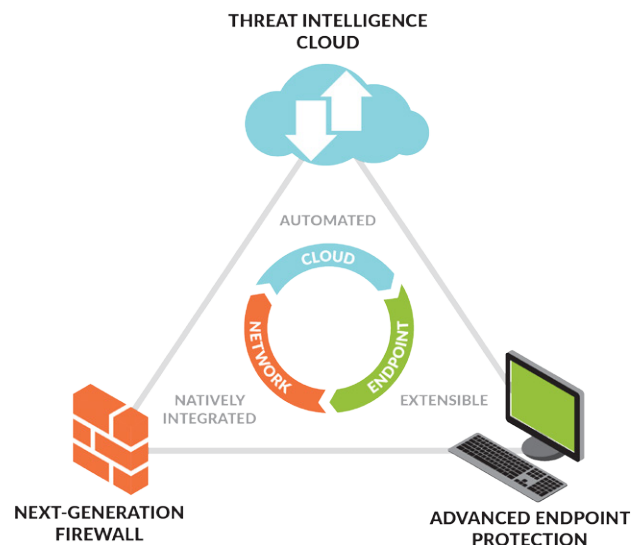


Figure 3: Integrated Security Platform



4401 Great America Parkway  
Santa Clara, CA 95054  
Main: +1.408.753.4000  
Sales: +1.866.320.4788  
Support: +1.866.898.9087  
www.paloaltonetworks.com

© 2015 Palo Alto Networks, Inc. Palo Alto Networks is a registered trademark of Palo Alto Networks. A list of our trademarks can be found at <http://www.paloaltonetworks.com/company/trademarks.html>. All other marks mentioned herein may be trademarks of their respective companies. pan-wp-traps-advanced-endpoint-protection-110915