

Palo Alto Networks and Swivel Secure

Frictionless 2FA/MFA for Remote Workers

Benefits of the Integration

Together, Palo Alto Networks and Swivel Secure offer:

- Seamless integration between Palo Alto Networks GlobalProtect and Swivel Secure AuthControl Sentry.
 - Rapid deployment tools for enterprises, including fast user provisioning.
 - Dynamic authentication based on user rights and target resource controls.
 - Risk-based authentication for a seamless user experience.
 - Robust, secure access for remote workers.
-

The Challenge

As organizations struggle to empower their remote workforces, data breaches continue to rise at an alarming rate, and attackers are a constant threat. Password compromises and credential theft remain primary risk factors as networks extend to every remote worker. Two-factor and multi-factor authentication (2FA and MFA) help significantly mitigate the risk of password compromise for on-premises and cloud-based resources. Organizations need frictionless security solutions for rapid deployment and adoption for remote workers.

Swivel Secure AuthControl Sentry

Deployed in more than 52 countries and implemented across organizations including Finance, Government, Healthcare, Education, and Manufacturing customers, AuthControl Sentry[®] provides organizations with reliable MFA. It delivers an intelligent solution to prevent unauthorized access to applications and data. AuthControl Sentry has the flexibility to support a range of network architectures, and its variety of authentication factors ensures maximum adoption. Whether you choose to authenticate users with a one-time code (OTC) on the AuthControl Mobile[®] app, via a traditional hardware token, or even using their fingerprints, AuthControl Sentry provides ultimate security and configurability to suit your organization's needs.

Palo Alto Networks

Palo Alto Networks GlobalProtect[™] network security for endpoints enables you to protect your mobile workforce by

extending Palo Alto Networks Next-Generation Firewall (NGFW) to all users, regardless of their location. It secures traffic by applying the NGFW's capabilities to understand application use, associate traffic with users and devices, and enforce security policies with next-generation technologies.

GlobalProtect safeguards your mobile workforce by inspecting all traffic using your NGFWs deployed as internet gateways, whether at the perimeter, in the demilitarized zone (DMZ), or in the cloud. Laptops, smartphones, and tablets with the GlobalProtect app automatically establish a secure IPsec/SSL VPN connection to the NGFW using the best gateway, thus providing full visibility of all network traffic, applications, ports, and protocols. By eliminating the blind spots in mobile workforce traffic, your organization can maintain a consistent view into applications.

Palo Alto Networks and Swivel Secure

Swivel Secure has integrated AuthControl Sentry with GlobalProtect to provide a robust security solution for remote workers. Users can seamlessly authenticate using a variety of authentication methods. AuthControl Sentry's risk-based authentication offers a combination of user and endpoint risk profiling and assessment to determine authentication requirements. GlobalProtect safeguards your mobile workforce by using the capabilities of Palo Alto Networks NGFWs to inspect all traffic, both incoming and outgoing.

Swivel Secure's MFA platform can be rapidly deployed in the cloud or on-premises, and fast user provisioning allows immediate user adoption. The joint solution provides an effective way to centrally manage remote workers' complex access needs with group- and user-level policy controls. In addition, AuthControl Sentry can dynamically increase or decrease user authentication requirements based on user role and the target resource or access.

Use Case No. 1: Enforce Strong Network Security Policies for Remote Workers

Challenge

Today, organizations are tasked with enabling a remote workforce, and reliable security is paramount. To react swiftly to macroeconomic demands, organizations need flexibility and dynamic policy control over their borderless networks and users.

Response

Together, GlobalProtect and AuthControl Sentry provide multilayered authentication for critical resources over a secure connection for remote users. The seamless user experience promotes quick adoption so you can increase your organization's security posture immediately.

Use Case No. 2: Stop Credential Theft

Challenge

As many organizations contend with supporting vast deployments of remote workers across geographies and time zones—and have fewer on-site personnel to help—stopping popular attacks like credential theft is critical. Organizations that lack strong authentication and secure remote access make easy targets for credential stuffing and theft.

Response

AuthControl Sentry and GlobalProtect integrate to deliver end-to-end-security with 2FA, secure remote access, and granular security policy enforcement. Centralized management allows administrators to rapidly deploy and protect their networks and remote workers.

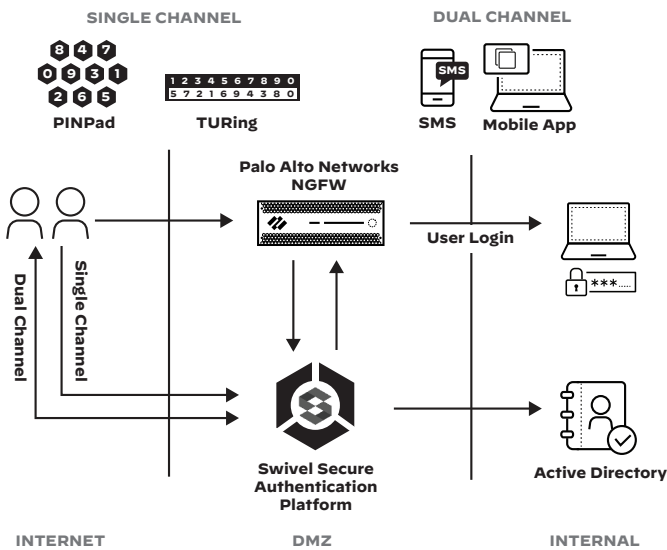


Figure 1: Palo Alto Networks and Swivel Secure integration

About Swivel Secure

Swivel Secure is an industry leader in authentication solutions. Founded in 2001, Swivel Secure protects thousands of organizations in over 52 countries. The award winning AuthControl Sentry® delivers multi-factor authentication (MFA), combined with single sign-on and risk-based authentication for intelligently securing cloud and on-premise architecture.

AuthControl Sentry® is an intelligent and dynamic solution that can protect your organizations from cybersecurity threats wherever you are and whatever market your business operates in. From government, to global airlines and national health services, to some of the largest financial institutions in the world, Swivel Secure is a trusted and respected security organization, preventing cybercrime with an intelligent authentication solution. For more information, visit www.swivelsecure.com.

About Palo Alto Networks

Palo Alto Networks, the global cybersecurity leader, is shaping the cloud-centric future with technology that is transforming the way people and organizations operate. Our mission is to be the cybersecurity partner of choice, protecting our digital way of life. We help address the world's greatest security challenges with continuous innovation that seizes the latest breakthroughs in artificial intelligence, analytics, automation, and orchestration. By delivering an integrated platform and empowering a growing ecosystem of partners, we are at the forefront of protecting tens of thousands of organizations across clouds, networks, and mobile devices. Our vision is a world where each day is safer and more secure than the one before. For more information, visit www.paloaltonetworks.com.



3000 Tannery Way
Santa Clara, CA 95054
Main: +1.408.753.4000
Sales: +1.866.320.4788
Support: +1.866.898.9087
www.paloaltonetworks.com

© 2020 Palo Alto Networks, Inc. Palo Alto Networks is a registered trademark of Palo Alto Networks. A list of our trademarks can be found at <https://www.paloaltonetworks.com/company/trademarks.html>. All other marks mentioned herein may be trademarks of their respective companies. swivel-secure-tpsb-070820